

to be passed on, though this will be avoided if at all possible). There is help available for those to whom the cost of the trip would be prohibitive, please speak to John Howard.

Booking: Please book early - return the enclosed form with a deposit of £100-00. (There are limited spaces available)

Clothing: We have a good stock of salopettes that we can lend to those who would need them, and while warm clothing is essential no additional clothing need be bought.

For further details about the Ski Trip please contact:

District Office 01902 332508

Rev John Howard (District Chair): 01902 424430

or Jon Phillips: youth@staffmc.org.uk



The market at Annecy

THE WOLVERHAMPTON & SHREWSBURY DISTRICT
OF THE METHODIST CHURCH

District Ski Trip

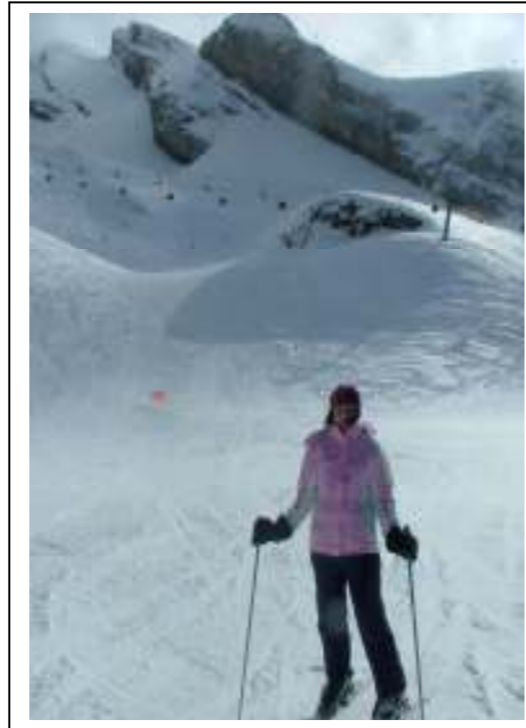
(for ages 13 – 20)

Anneçy, French Alps



Part of the 2010 Group on the slope.

February 19th – 26th 2011



(One of last year's beginners showing how its done!).

Once again young people and leaders from youth groups across the District are again taking part in a Ski Trip during the half term week in February 2011. The group will stay at the Youth Hostel, Anneçy, and ski at two ski areas, Le Semnoz and La Clusaz. The trip is open to beginners and experienced skiers.

In order to allow maximum participation the costs are being kept to a minimum but where costs prevent any young people going help can be provided. Last year we are travelled for the first time by coach leaving late Friday evening. We enjoyed it so much that we are taking a coach again. On the return journey we will return to the District early on the Sunday morning. During the evenings there will be various activities including Christian worship.

The trip is being led by the District Chair, John Howard who has run trips of this sort for quite a few years, and youth groups across the District are providing leaders.

Programme: *Friday 18th About 10pm* Participants meet at venues to be arranged (depending upon where participants come from).

Coach to Dover and cross the Channel on a ferry. Drive to Anneçy Youth Hostel, arriving early Saturday evening.

Sunday Collect skis and ski at Le Semnoz (a small resort near Anneçy).

Monday -Thursday Ski at La Clusaz, subject to conditions and needs of the group.

Friday Morning in Anneçy, afternoon at Le Semnoz.

Saturday Coach returns to Calais. After crossing channel, return to District arriving back soon after midnight.



([Its tough on the slopes!])

Cost: £560 (Please see note on booking form). This includes travel, ski costs, accommodation, food and insurance. Participants are also asked to bring a packed lunch for the journey and money to buy breakfast on Saturday morning. The only additional money required is spending money. (Since some costs can vary greatly between now and next February major increases in cost may have