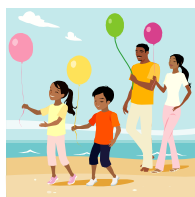


Wolverhampton & Shrewsbury Methodist District Children's Holiday

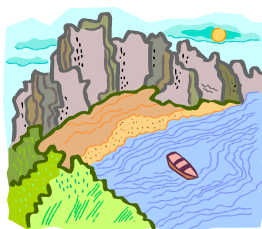


The Wolverhampton & Shrewsbury Methodist District Children's Holiday provides week-long holidays for children who would not otherwise have a break away from their home environment. Many have **never** previously swum in the sea, explored tidal rock-pools, or enjoyed an ice-cream on the beach. Many struggle with difficult and unstable home situations all year round, perhaps caring for younger siblings or an ill parent, or being at risk from violence or other forms of abuse. We aim to give such children a safe, enjoyable break from their everyday lives.



Each year we take between thirty and forty children from the West Midlands region down to North Devon for one week. We stay on the campus of Kingsley School, Bideford [formerly Edgehill College] Kingsley School is an international boarding school founded by the Methodist Church.

The children have the run of the school grounds, including several playing fields and an indoor sports centre. They have a cooked breakfast and evening meal at the school and a packed lunch while out and about during the day.



Activities include cliff-top walks, beach cricket, swimming, visits to adventure playgrounds, nature parks, days on different beaches and sports. Since the holiday has been running for over forty years, we have a tried and tested programme and excellent local support and contacts.



The majority of the children who attend the holiday are from the Wolverhampton, Dudley, Staffordshire and Telford areas. Children are nominated by Education Welfare Officers, Head Teachers and in Staffordshire also by Social Services. We have good connections with local schools, and there are several teachers amongst the current holiday staff.

Ensuring the wellbeing of a large group of children, often with emotional or behavioural difficulties, requires a committed and experienced staff team. There are usually around twenty adult leaders on the holiday, including those who supervise the children, plus housekeeping staff. The holiday leader is ultimately responsible for the children's safety and wellbeing. Many leaders have been involved with the holiday for a number of years and all offer their support on a voluntary basis. The preparations for next year's holiday begin as the last child is collected from the coach home.



- The holiday costs around £13,500 per year.
- It does not receive any government or other regular funding.
- Each year holiday staff and supporters raise the funds needed to enable the holiday to take place.
- Support comes from the Methodist District, local businesses, charitable trusts, and generous individuals.



Although we have always managed to raise the necessary funds, with each year it becomes increasingly difficult and costs have risen considerably since the amalgamation of the residential school we use as 'home' for the week.



This year's holiday will take place in August. We have already raised around £5000 and are making some progress towards our target figure. We are continuing to look for new sources of support, both now and in the long term. We have applied to Children in Need for funding for the first time this year. Each child's place on the holiday costs approx £250; this covers accommodation, travel, food and entrance fees etc. The staff team also need to be paid for at approx £250 per person.

I hope this brief introduction to our work has encouraged you to consider making a donation to support the work of the Wolverhampton & Shrewsbury Methodist District Children's Holiday.



Please do get in touch with me via email or on 01902 746316 if you are interested in exploring this opportunity further.

Thank you for your support.

Yours sincerely, Trish Prescott Holiday Co-ordinator mumtp~yahoo.co.uk

Cheques payable to: 'Methodist church children's holiday fund' send to District Office, Beckminster Methodist Church, WV3 7BQ

Are you going on holiday this year?

